

September 30th, 2020

Dear Mrs./Mr. Mustermann,

Today's edition of our newsletter begins with a moment of pause in grateful remembrance of Wolfgang Clement, former Minister President of North Rhine-Westphalia and a central political advocate of stem cell research.

Subsequently, we offer you an impression of how young scientists are promoted in the Stem Cell Network.NRW, as well as an outlook on UniStem Day 2021. In addition, we point out an interesting call for papers and report on research involving so-called embryo models.



- **Obituary**
- **Targeted support for young scientists**
- **Registration for UniStem Day 2021 open**
- **CfP: Special Issue of *Cells* on iPSCs**
- **Research on embryo-like cell structures**

Enjoy reading and stay healthy!

Obituary

The Stem Cell Network North Rhine-Westphalia mourns

Wolfgang Clement

In his function as Minister President of the State of North Rhine-Westphalia he was one of the political pioneers of stem cell research at the state and federal level. His visionary decision to promote this biomedically significant field, his energy in its implementation and his constant dedication to research, science and innovation remain unforgotten.

Prof. Dr. med. Oliver Brüstle, Bonn
 (on behalf of the executive board)

Targeted support for young scientists to help them master job-related challenges



In September 2020, a Supervision event for young scientists offered by the Stem Cell Network NRW took place for the third time already. Further events in the coming months help develop leadership skills and promote diversity awareness.

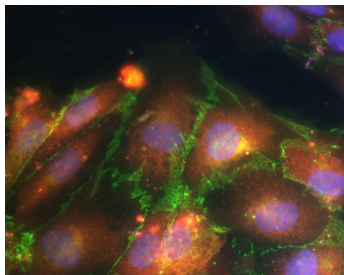
[Complete article >>](#)



On March 5, 2021, numerous research institutions in NRW will once again open their doors to give interested schoolchildren a whole day's worth of insights into stem cell research.

[Complete article >>](#)

Call for papers: "iPS Cells (iPSCs) for Modelling and Treatment of Human Diseases"



Scientists in the Stem Cell Network NRW edit a special issue of "Cells". Manuscripts can be submitted until March 31, 2021.

[Complete article >>](#)

Perspectives of research on embryo-like cell structures



Science is making rapid progress in the production of 3D cell structures with characteristics of animal and human embryos. Researchers are calling for a debate on how to handle these 'embryo models', and for clear regulation.

[Complete article >>](#)

Contact

Stem Cell Network North Rhine-Westphalia

An association funded by the Ministry for Culture and Science of North Rhine-Westphalia



Postal address:

Stem Cell Network NRW

c/o Life Science Center

Merowingerplatz 1

40225 Duesseldorf

Germany

Phone: +49 (0) 211/3368 7081

E-Mail: info@stemcells.nrw.de

Internet: www.stemcells.nrw.de

This message contains confidential information and is intended only for the individual named. If you are not the named addressee you should not disseminate, distribute or copy this e-mail. Please notify the sender immediately by e-mail if you have received this e-mail by mistake and delete this e-mail from your system.

[Unsubscribe](#)